

## How To Upgrade Spark on the Amiko SHD-8900 Alien, Alien2 & Alien2+ Models

The latest Spark softwares can include new features, improvements and also several fixes for various issues, therefore it is highly recommended to always keep your Spark OS software up-to-date on your Set-Top Box. To do that, you can follow several methods.

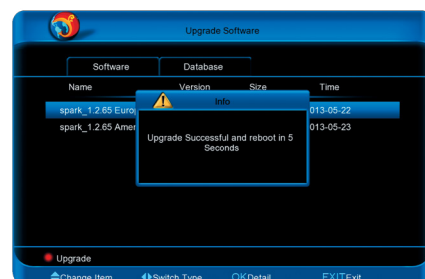
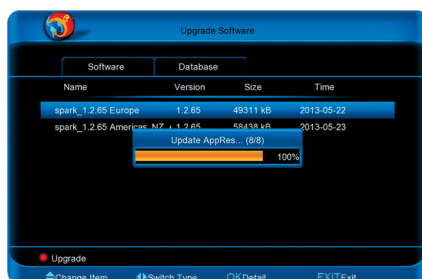
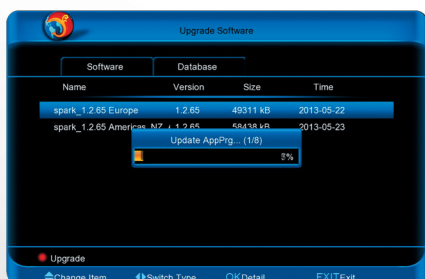
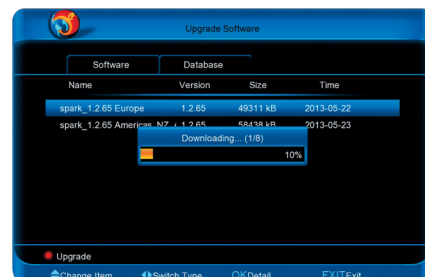
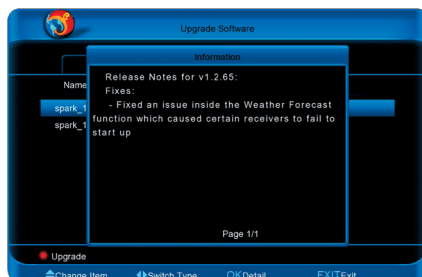
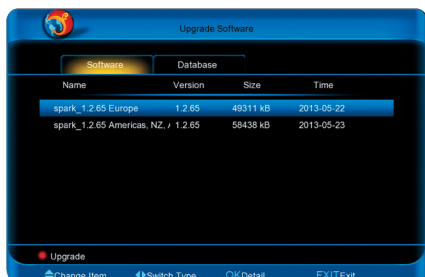
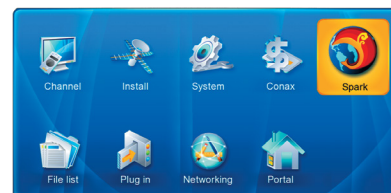
### Please follow any of the following methods:

Method 1: Through Spark Online .....	1
Method 2: Through USB.....	2
Method 3: Using a Spark Rescue Image .....	3

### Method 1: Through Spark Online

The easiest way to upgrade your Set-Top Box is using the built in Spark Online function, which allows You to download and upgrade the Set-Top Box through the Internet without the need to use any external devices (such as a USB stick).

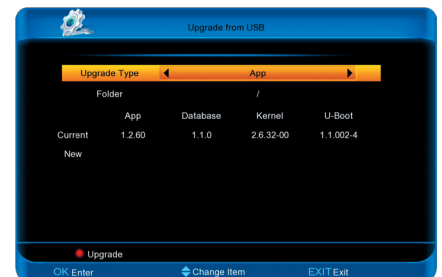
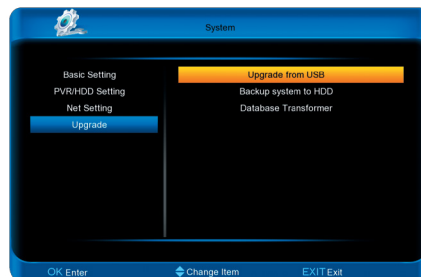
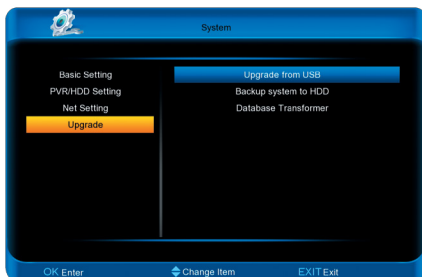
- Make sure that your Set-Top Box is connected to the Internet by either Ethernet or USB WiFi (USB 3G is also supported, however it is not recommended as a Spark OS software release can be up to 65Mb of data)
- Enter the Main Menu by pressing the **MENU** button on the Remote Control
- Select **Spark Online** and press the **OK** button to enter
- Enter the **Upgrade Software** menu
- Using the **UP / DOWN** buttons, highlight the latest corresponding software (**Europe** version for European use)(The **Americas, NZ & AU** software is only available for authorized Amiko Americas receivers.)
- With the **OK** button, You can view the release notes for each software
- Press the **RED** button to start the upgrade process



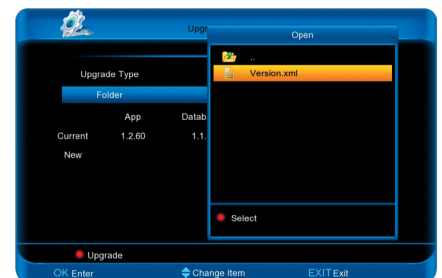
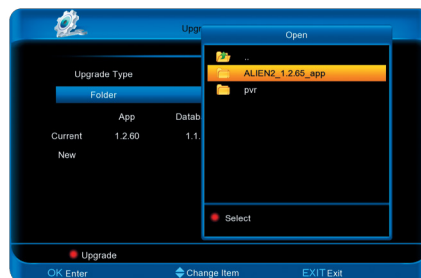
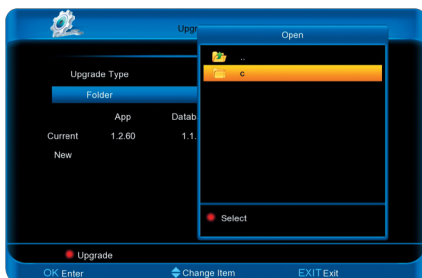
- After the upgrade has been successful, the Set-Top Box is going to automatically restart with the new Spark OS version

## Method 2: Through USB

- Download the latest Spark OS software from our website [www.amikostb.com](http://www.amikostb.com)
- Extract the .RAR file (This will result a folder called **SHD-8900\_#.#.##\_app** or **ALIEN2\_#.#.##\_app** (depending on your model)(Where #.#.## stands for the Spark OS version))
- Copy the folder to a USB stick
- With your Set-Top Box powered on, connect the USB stick to the Set-Top Box's USB port
- Enter the Main Menu by pressing the **MENU** button on the Remote Control
- Go to **System > Upgrade > Upgrade from USB**



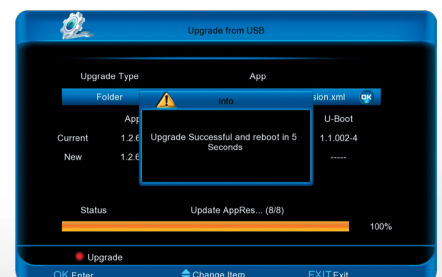
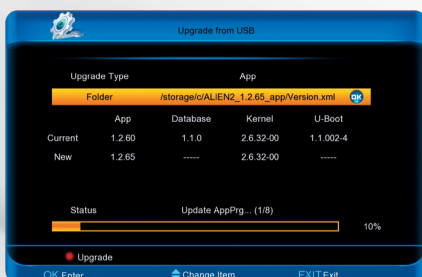
- Select the upgrade type (this is indicated by the end of the name of the folder (in most of the cases, it's "**App**") by using the **LEFT / RIGHT** buttons
- By using the **UP / DOWN** buttons, highlight the **Folder** option, and press **OK**
- By using the **UP / DOWN** and **OK** buttons, navigate and select the **Version.xml** file



- After selecting the Version.xml file, You should be able to see the new Spark OS version like bellow:



- Press the **RED** button to start the upgrade



- After the upgrade has been successful, the Set-Top Box is going to automatically restart with the new Spark OS version

## Method 3: Using a Spark Rescue Image

It might appear that your Alien series Set-Top Box fails to start. This can be caused by several reasons. Depending on the cause, You might be able to restore the Set-Top Box by using a Spark Rescue Image and following the below steps:

Please note, that the steps below are only for advanced users, and using this method will result the loss of stored Channels, Settings, etc...

- Download the corresponding file for your model:  
 Amiko SHD-8900 Alien:  
[http://service.amikostb.com/spark\\_rescue\\_image\\_Amiko\\_SHD-8900\\_Alien.rar](http://service.amikostb.com/spark_rescue_image_Amiko_SHD-8900_Alien.rar)  
 Amiko Alien2 Twin, Alien2 Triple, Alien2+ Triple:  
[http://service.amikostb.com/spark\\_rescue\\_image\\_Amiko\\_Alien2.rar](http://service.amikostb.com/spark_rescue_image_Amiko_Alien2.rar)
- After downloading the Spark Rescue Image from the internet, extract the downloaded \*.RAR or \*.ZIP file (this should result two files ("userfsub.img" & "mlImage") inside a folder called **spark**)
- Format a USB stick (with preferably a capacity of max. 4Gb) to **FAT32** file system
- Copy the folder called "**spark**" to the USB stick (the folder name is case sensitive!)
- Disconnect the USB stick from your PC using the "Remove USB device safely" option
- Power OFF your Set-Top Box using the Main Power Switch at the rear panel
- Press and hold the **OK** button on the front panel, and power on the receiver with the Main Power Switch
- When **FORCE** / **Force** appears on the VFD/LED display, release the **OK** button
- Press and release the **CH+ (UP)** button - **SPAR** / **SPAW** should appear on the VFD/LED display
- Press and release the **OK** button on the front panel - The Set-Top Box now switches to Spark mode, starts loading and then stops ( **SUCC** / **SUCC** → **BOOT** / **boot** )
- Power OFF the Set-Top Box again with the Main Power Switch, and connect the USB stick to the **rear USB connector**
- Press and hold the **OK** button on the front panel, and power on the receiver with the Main Power Switch
- When **FORCE** / **Force** appears on the VFD/LED display, release the **OK** button
- Press and release the **VOL+ (RIGHT)** button on the front panel - The Set-Top Box should start the upgrade of the Spark Rescue Image from the USB Stick
- After the Set-Top Box finishes upgrading the Spark Rescue Image, it is going to automatically reboot, and start Spark
- Depending on the actual Spark Rescue Image version, You might need to upgrade your receiver with either Method 1. or Method 2. to the latest available Spark OS version. (You can check your current version after the Rescue Image upgrade inside **Main Menu** > **System** > **Basic Settings** > **System Information**)

### Issues while loading the Spark Rescue image

The Set-Top Box might display a **7 70** / **7 70** error message on the VFD/LED display. This means the Spark Rescue image files can not be read from the USB stick. In this case, please check if the file names are exactly same as described above (**the file & folder names are CASE SENSITIVE!**), try re-formatting the USB stick to FAT32 file system, or try upgrading your Set-Top Box with a different USB Stick.

### Disclaimer

**Loading an improper Spark Rescue Image can damage your Set-Top Box, which leads to the void of warranty!** If You are not sure if You have downloaded the Rescue Image from a reliable source, please contact your local dealer or authorized service partner before loading.